



Check Dams in
JHARGRAM
Special Initiative 2022-2023

FLOWING OPPORTUNITIES

Water Resources Investigation & Development Department, Government of West Bengal

CO Visit at choRichtal, jhargram
22.32094, 87.1468, 3.4m, 10°
04-Aug-2023 10:00:39 am

CHECK DAM SPECIAL INITIATIVE

Check Dam is the best possible option to conserve surface water for providing minor irrigation support for agriculture aiming livelihood development of small and marginal farmers. WRI&D Department made the commitment for 2022-2023 to construct 50 Check Dams with estimated cost of INR 25 Crore from the State Budget. It is to provide an assured irrigation potential of 1,700 Ha with 11.5 lakh cum of water storage benefiting 12000 people in the different parts of Jhargram District.

These farmers will also be supported in improving their production from various agriculture, horticulture, and fisheries activities by empowering Water Users Association (WUA) of all the water users of these Check Dams.

JHARGRAM

Jhargram is part of the Chota Nagpur Plateau having undulating topography, uneven rainfall, predominantly single-cropped rain-fed and tribal-dominated district. There is very limited scope for harnessing groundwater resources and has the scope to conserve only surface water resources.



Mouza- Khasjungle
JL No - 12
CCA- 11 (Ha)
IP- 22(Ha)
Lat- 22.14179
Long- 87.01518

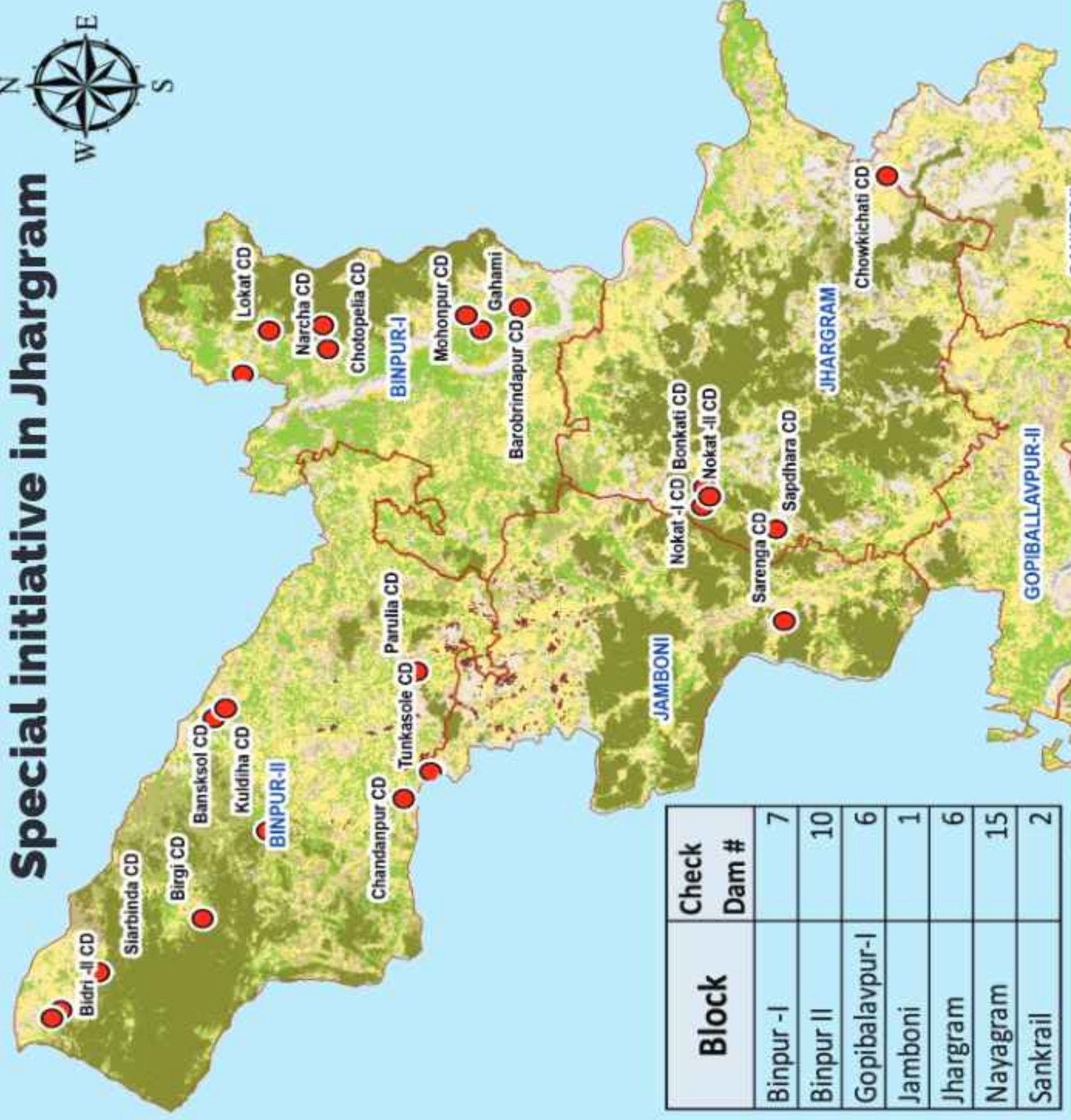
OBJECTIVE To conserve rain water in different type of water bodies and structures for sustainable development; it's utilization for agriculture & allied activities and ground water recharging.

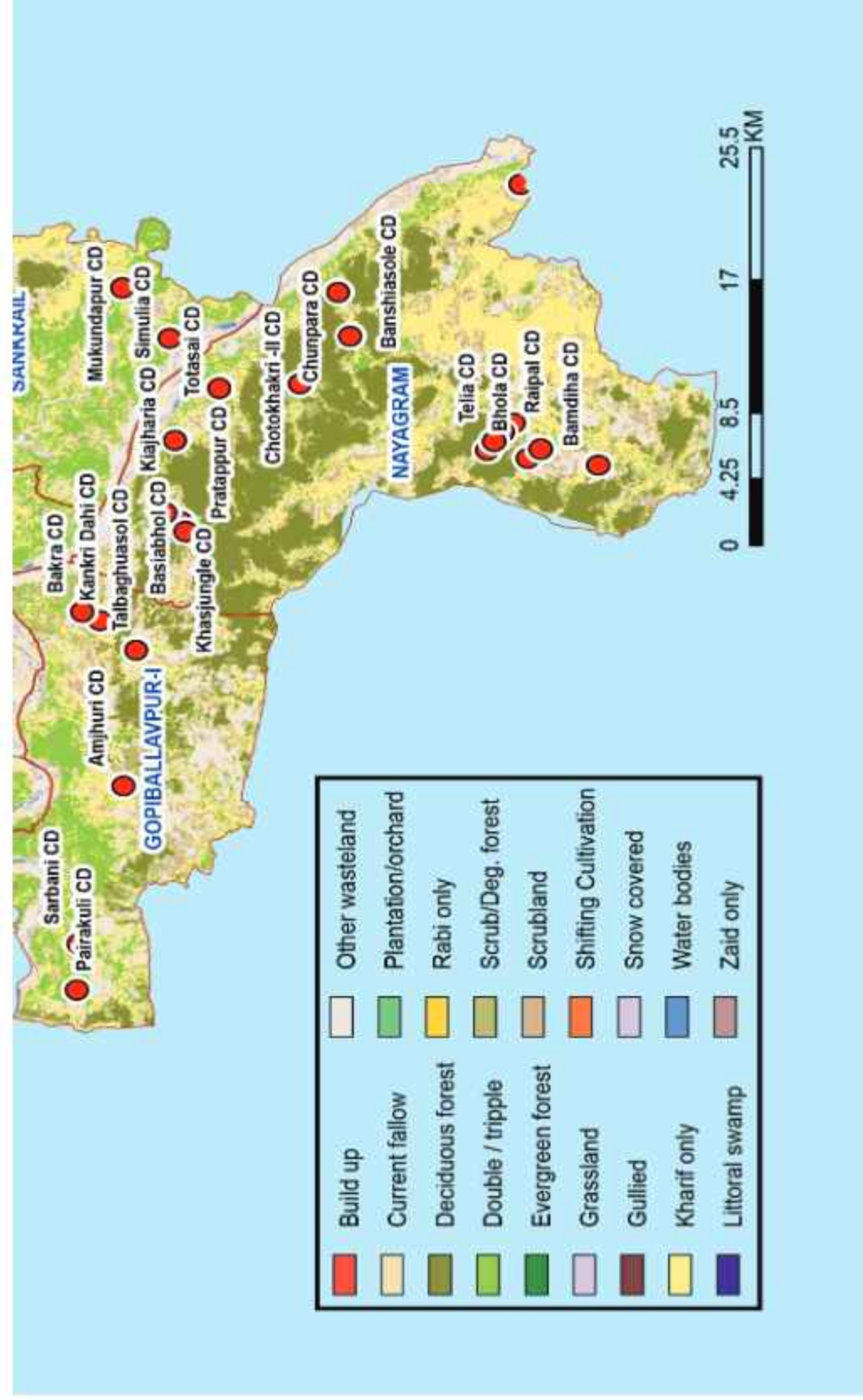
ungle CD, Nayagram, Jhargram



Image © 2023 Airbus

Check dams (CD), Special initiative in Jhargram





Achievement :

47 Check Dams have been already completed to create an Irrigation Potential of about 1,674 Hectare. About 10.95 lakh cubic meters of storage capacity has been created to extend benefit to 11,000 persons. The remaining three check dams are expected to be completed soon.



Nayagram	Chotokhakri	79	Bhulaveda	WBADMIP	42.79	55.63	22.07422 N 87.08966E
Block	Mouza	JL. No.	G.P.	Program	C.C.A(Ha)	I.P (Ha)	Lat/ Long
Nayagram	Telia	161	Chandr-arekha	WBADMIP	32.87	42.73	21.9767 N 87.05684 E





Block : Nayagram

Nayagram	Basiabhol	13	Patina	Core Sector	11	22	22.13175N 87.00444E
Block	Mouza	JL. No.	G.P.	Program	C.C.A(Ha)	I.P (Ha)	Lat/ Long
Nayagram	Kiajharria	39	Bara-Khagri	Core Sector	11	22	22.1381N 87.05844E



kiyajharria CD



Nayagram	Bamdiha	179	Arrah	Core Sector Programme	11	22	21.92451, 87.04222
Block	Mouza	JL. No.	G.P.	Program	C.C.A(Ha)	I.P (Ha)	Lat/ Long
Nayagram	Chunpara	122	Malam	Core Sector Programme	15	30	22.148505, 87.07985





Nayagram	Baliakhal	244	Jamirapal	Core Sector	11	22	22.962924, 87.203648
Block	Mouza	JL. No.	G.P.	Program	C.C.A(Ha)	I.P (Ha)	Lat/ Long
Nayagram	Bansiasole	116	Malam	Core Sector Programme	11	22	22.048948, 87.117046



POCO



Block : Nayagram

Nayagram	Khasjangal	12	Patina	Core Sector Programme	11	22	22142075, 87.015863
Block	Mouza	JL. No.	G.P.	Program	C.C.A(Ha)	I.P (Ha)	Lat/ Long
Nayagram	Totasai	59	Bara-Khagri	Core Sector	11	22	22.10944N, 87.09288E





Nayagram	Kuilisuta	184	Chandrekha	Core Sector	13.84	20.76	21.959683N, 87.045813E
Block	Mouza	JL. No.	G.P.	Program	C.C.A(Ha)	I.P (Ha)	Lat/ Long
Nayagram	Chilkipada	185	Chandr-arekha	Core Sector	17.55	26.33	22.952986N, 87.052161E





Nayagram	Pratappur	12	Patina	Core Sector	16.32	24.48	22.13403N, 87.01024E
Block	Mouza	JL. No.	G.P.	Program	C.C.A(Ha)	I.P (Ha)	Lat/ Long
Nayagram	Garduara	193	Baligeriya	WBADMIP	24.30	31.59	21.966354 N 87.067517E



Latitude: 21.966354
 Longitude: 87.067517
 Elevation: 39.6513 m
 Accuracy: 6.5 m
 Time: 08-04-2023 10:10
 Note: Garduara CD



Nayagram	Bhola	162	Chandrarakha	WBADMIP	38.98	50.68	21.97975N, 87.05148 E
Block	Mouza	JL. No.	G.P.	Program	C.C.A(Ha)	I.P (Ha)	Lat/ Long
Binpur-II	Bidri	6	Banspahari	WBADMIP	39.06	50.78	22.77274 N 86.62402 E





Block : Binpur-II

Kuldiha CD
 22.65984, 86.73642, 87.0m, 117°
 16/03/2023 14:57:38

Binpur II	Kuldiha	139	Belpahari	Core Sector	15	23	22.65957851, 86.73672442
Block	Mouza	JL. No.	G.P.	Program	C.C.A(Ha)	I.P (Ha)	Lat/ Long
Binpur-II	Banksol	128	Bhelaidiha	Core Sector	8	13	22.6823359, 86.81315499



Banksol CD
 22.6826, 86.81328, 66.0m, 323°
 21/03/2023 14:25:42



Binpur II	Tumkasole	266	Sondhapara	WBADMIP	28.46	37.00	22.57043 N, 86.77349 E
Block	Mouza	JL. No.	G.P.	Program	C.C.A(Ha)	I.P (Ha)	Lat/ Long
Binpur-II	Parulia	352	Ergoda	Core Sector	22	34	22.578287 N, 86.836402 E





Block : Binpur-II

Bidri CD-II, Binpur-II
 22.77801, 86.61927, 132.7m, 233°
 04/08/2023 12:17:04 pm

Binpur-II	Bidri	6	Banspahari	WBADMIP	41.69	54.20	22.77801 N, 86.61927 E
Block	Mouza	JL. No.	G.P.	Program	C.C.A(Ha)	I.P (Ha)	Lat/ Long
Binpur II	Chandanpur	262	Sondhapara	WBADMIP	33.61	43.69	22.553294 N, 87.061709E



Block : Binpur II

Chandanpur CD, Binpur-II
 22.58546, 86.75645, 61.1m, 164°
 04/08/2023 02:03:40 pm



Binpur-II	Birgi	57	Bhulaveda	WBADMIP	23.58	30.65	22.69547 N, 86.68170E
Block	Mouza	JL. No.	G.P.	Program	C.C.A(Ha)	I.P (Ha)	Lat/ Long
Binpur-II	Baksole	128	Bhelaidiha	WBADMIP	25.30	32.88	22.68914N, 86.80719E





Block : Binpur-II

Siarbinda CD, Binpur-II
 22.75217, 86.64791, 159.2m, 226°
 04/08/2023 11:46:29 am

Binpur-II	Siarbinda	15	Bhulaveda	WBADMIP	23.73	30.85	22.75217 N 86.64791E
Block	Mouza	JL. No.	G.P.	Program	C.C.A(Ha)	I.P (Ha)	Lat/ Long
Binpur I	Lokat	595	Sijua	WBADMIP	29.65	38.54	22.65901 N, 87.04986E



Block : Binpur-I

lokata CD
 22.65901, 87.04986, 17.9m
 04/08/2023 09:16:44 AM



Binpur I	Barobrindapur	823	Dharampur	WBADMIP	34.18	44.43	22.54281 N, 87.05045 E
Block	Mouza	JL. No.	G.P.	Program	C.C.A(Ha)	I.P (Ha)	Lat/ Long
Binpur I	Mohonpur	826	Dharampur	WBADMIP	28.42	36.95	22.553294 N, 87.061709E





Binpur I	Shyamchar-andanga	617	Sijua	Jaltirtha	35.87	51.33	22.6736, 86.7668
Block	Mouza	JL. No.	G.P.	Program	C.C.A(Ha)	I.P (Ha)	Lat/ Long
Binpur I	Gahami	879	Baita	Jaltirtha	32	45	22.521926, 87.064165





Binpur I	Narcha	579	Sijua	WBADMIP	32.71	42.53	22.62680 N, 87.03819 E
Block	Mouza	JL. No.	G.P.	Program	C.C.A(Ha)	I.P (Ha)	Lat/ Long
Binpur I	Madhupur	697	Sijua	WBADMIP	27.94	36.33	22.62935 N, 87.0533E





Gopiballavpur I	Pairakhuli	13	Satma	Core Sector	8	13	22.186221, 86.740458
Block	Mouza	JL. No.	G.P.	Program	C.C.A(Ha)	I.P (Ha)	Lat/ Long
Gopiballavpur I	Sarbani	26	Satma	Jaltirtha	39	53	22.18573 N, 86.76668 E





Gopiballavpur I	Bakra	265	Alampur	Core Sector	13	20	22.18355N, 86.95822E
Block	Mouza	JL. No.	G.P.	Program	C.C.A(Ha)	I.P (Ha)	Lat/ Long
Gopiballavpur I	Kankridahi	380	Alampur	Core Sector	13	20	22.17416692, 86.9535815





Block : Gopiballavpur I

22°9'22", 86°56'10", 3.7m, 192°
04-Aug-2023 3:02:19 pm

Gopiballavpur I	Talbghuasol	392	Kendugari	Jaltirtha	45.5	53	22.15607, 86.93606
Block	Mouza	JL. No.	G.P.	Program	C.C.A(Ha)	I.P (Ha)	Lat/ Long
Gopiballavpur-I	Amjuri	143	Saria	Core Sector	11.62	17.43	22.16254 N, 86.85821 E



Lat 22.162605°
Long 86.857968°
14/06/23 10:27 AM



CD visit at Simulia CD wua, Sankrail Block.
 22.13946, 87.11594
 Aug 4, 2023 10:38:50 AM

Sankrail	Simulia	278	Laudaha	WBADMIP	38.74	50.36	22.13946N 87.11594E
Block	Mouza	JL. No.	G.P.	Program	C.C.A(Ha)	I.P (Ha)	Lat/ Long
Sankrail	Mukundapur	240	Kultikri	WBADMIP	35.03	45.54	22.16342 N, 87.14494 E



CD visit at Mukundapur CD wua, Sankrail Block.
 22.16342, 87.14494
 Aug 4, 2023 9:43:19 AM



Jhargram	Sapdhara	775	Sapdhara	WBADMIP	37.85	49.20	22.38154 N, 86.92559E
Block	Mouza	JL. No.	G.P.	Program	C.C.A(Ha)	I.P (Ha)	Lat/ Long
Jhargram	Bonkati	759	Sapdhara	WBADMIP	32.17	41.82	22.42081 N, 86.95188E





Jhargram	Nokat	760	Sapdhara	WBADMIP	33.43	43.45	22.422096 N 86.93988 E
Block	Mouza	JL. No.	G.P.	Program	C.C.A(Ha)	I.P (Ha)	Lat/ Long
Jhargram	Raipal	160	Chandr-arekha	WBADMIP	38.10	49.53	21.972314 N, 87.061745 E





Jhargram	Nokat	760	Sapdhara	WBADMIP	38.58	50.15	22.41802N, 86.94595N
Block	Mouza	JL. No.	G.P.	Program	C.C.A(Ha)	I.P (Ha)	Lat/ Long
Jhargram	Chowkichati	645	Dudhkundi	WBADMIP	32.97	42.86	22.32094 N, 87.14680 E





Jamboni	Sarenga	222	Chilkigarh	Core Sector	18.65	27.98	22.166572 N, 86.85566 E
Block	Mouza	JL. No.	G.P.	Program	C.C.A(Ha)	I.P (Ha)	Lat/ Long





Involvement of Water User Associations



Dahatmul Samannay W U A . Exposure Visit of cabbage,
Mumbai - Kolkata Hwy, Kalsi Bhangra, West Bengal 721513, India
22.34797 - 87.07619, 0.0m, 339°
13/12/2020





Spmu visit at Raipal

21-9723-87-06149-38-4m

77001-405-1010-141-4

WRIDD - The Water Resources Investigation and Development (WRI&D) Department is mainly responsible for providing irrigation services to the small and marginal farmers of West Bengal by implementing various types of minor irrigation schemes under different programs utilizing groundwater and surface water resources.

WRI&D Department Works in Jhargram - 568 Surface flow Schemes viz Check Dam, Surface flow minor Irrigation scheme, Water Harvesting Tank, Water Detention structure, Minor Irrigation Tank etc have been completed by the department since 2011 by creating an Irrigation Potential of 8,710.25 Hectares under the different Programs viz. Jalatirtha, WBADMIP, Matir Shristi etc. It includes the creation of 97 Check Dam with an Irrigation Potential of 2819 Ha in Jhargram District. 184 Solar Operated Minor Irrigation Schemes Supporting Irrigation Potential of 757 Hectares including 28 sprinkler irrigation systems. Agriculture, Horticulture & Fishery activities are also facilitated by the department in the selected areas through 238 Water Users Associations (WUAs).

Implemented by
Water Resources Investigation & Development Department
Government of West Bengal

5th Floor | Block-A | Khadya Bhawan | 11-A, Mirza Ghalib Street | Kolkata 700 087
www.wbridd.gov.in

